

2MP WiFi Mini PTZ Network Camera

4x Starlight PTZ Network Camera



- 1/2.8-in. 2 MP STARVIS™ CMOS Sensor
- 1080p at 30 fps Maximum Resolution
- H.265 and H.264 Dual Codecs
- 2.7 mm to 11 mm, 4x Optical Zoom
- Triple-stream Encoding
- WiFi Support (IEEE 802.11b/g/n)
- Starlight Technology for Ultra-low Light Sensitivity
- True Wide Dynamic Range (120 dB)
- Intelligent Video System (IVS)
- IP66 Ingress Protection and IK10 Vandal Resistance
- Five-year Warranty*



System Overview

The 2 MP Starlight WiFi Mini PTZ Dome camera features a 1/2.8-in. STARVIS™ CMOS imager with a 4x optical zoom lens, and provides an all-in-one solution for capturing video surveillance for indoor and outdoor applications over a WiFi network. The camera uses the H.265 video compression standard to improve encoding efficiency while preserving high-quality video. The PTZ camera is equipped with quick and accurate pan/tilt/zoom control and True Wide Dynamic Range for applications.

Functions

Starlight Technology

For challenging low-light applications, Dahua's Starlight Ultra-low Light Technology offers best-in-class light sensitivity, capturing color details in low light down to 0.005 lux. The camera uses a set of optical features to balance light throughout the scene, resulting in clear images in dark environments.

Intelligent Video System

A camera with IVS quickly and accurately responds to monitoring events in a specific area. In addition to scene analytics, the camera offers tamper detection by recognizing a dramatic scene change and generating a warning message to inspect the camera.

Wide Dynamic Range

The camera achieves vivid images, even in the most intense contrast lighting conditions, using industry-leading wide dynamic range (WDR) technology. For applications with both bright and low lighting conditions that change quickly, True WDR (120 dB) optimizes both the bright and dark areas of a scene at the same time to provide usable video.

High Efficiency Video Coding (H.265)

The H.265 (ITU-T VCEG) video compression standard offers double the data compression ratio at the same level of video quality, or substantially improved video quality at the same bit rate, as compared to older video compression technologies. H.265 offers such impressive compression by expanding the pattern comparison and difference-coding, improving motion vector prediction and motion region merging, and incorporating an additional filtering step called sample-adaptive offset filtering.

Interoperability

The camera conforms to the ONVIF (Open Network Video Interface Forum) ensuring interoperability between network video products regardless of manufacturer.

Environmental

With a temperature range of -30 °C to +60 °C (-22 °F to 140 °F), the camera is designed for extreme temperature environments. The camera complies with an IK10 vandal resistance rating making it capable of withstanding the equivalent of 5 kg (11.02 lbs) of force dropped from a height of 40 cm (15.75 in.). Subjected and certified to rigorous dust and water immersion tests, the IP66 rating makes it suitable for demanding outdoor applications.

Technical Specification

Camera

Image Sensor	1/2.8-in. STARVIS™ CMOS Sensor
Effective Pixels	1920(H) x 1080(V), 2 MP
RAM/ROM	256 MB / 128 MB
Scanning System	Progressive
Electronic Shutter Speed	1/1 s to 1/30,000 s
Minimum Illumination	Color: 0.005 lux at F1.6 B/W: 0.0005 lux at F1.6

Lens

Focal Length	2.7 mm to 11 mm
Maximum Aperture	F1.6
Angle of View	Horizontal: 30° to 112.5°
Optical Zoom	4x
Focus Control	Auto, Manual
Close Focus Distance	100 mm to 1000 mm (3.94 in. to 39.37 in.)

DORI Distance¹

Detect (8 ppf)	Observe (19 ppf)	Recognize (38 ppf)	Identify (76 ppf)
124.10 m (407.15 ft)	49.70 m (163.06 ft)	24.80 m (81.36 ft)	12.40 m (40.68 ft)

PTZ

Pan/Tilt Range	Pan: 0° to 355° Tilt: 0° to 90°
Manual Control Speed	Pan: 0.1° to 100° /s Tilt: 0.1° to 60° /s
Preset Speed	Pan: 100° /s Tilt: 60° /s
Presets	300
PTZ Mode	8 Tours (up to 32 presets per tour)
Speed Compensation	Proportional Pan/Tilt Speed to Zoom Ratio
Power up Action	Auto restore to previous PTZ and lens status after power failure
Idle Motion	Activate Preset, Scan, Tour, Pattern if there is no command in the specified period
Protocol	DH-SIP

Video

Compression	H.265, H.264, MJPEG (sub-stream only)
Streaming Capability	Three (3) Streams
Resolution	1080p (1920 x 1080), 720p (1280 x 720), D1 (704 x 480), CIF (352 x 240)

Frame Rate	Main Stream	1080p, 720p, or D1 at 30 fps
	Sub Stream 1	D1 or CIF at 30 fps
	Sub Stream 2	720p, D1, or CIF at 30 fps
Bit Rate Control		CBR, VBR
Bit Rate		H.265/H.264: 448 K to 8192 Kbps MJPEG: 5120 Kbps to 10240 Kbps
Day/Night		Auto (ICR), Color, B/W
Backlight Compensation		BLC, HLC, True WDR (120 dB)
White Balance		Auto, ATW, Indoor, Outdoor, Manual, Sodium Lamp, Natural, and Street Lamp
Gain Control		Auto, Manual, Gain Priority, Shutter Priority, Aperture Priority
Noise Reduction		Ultra DNR (2D/3D)
Advanced Features		Motion Detection, Region of Interest, Defog
Digital Zoom		16x
Flip		180°
Privacy Masking		Up to 24 areas

Network

Ethernet	RJ-45 (10 Base-T/100 Base-TX)
Protocol	IPv4/IPv6, HTTP, HTTPS, SSL, TCP/IP, UDP, UPnP, ICMP, IGMP, SNMP, RTSP, RTP, SMTP, NTP, DHCP, DNS, PPPoE, DDNS, FTP, IP Filter, QoS, Bonjour, 802.1x
WiFi	IEEE 802.11b/g/n 2.4 GHz 150 Mbps
Interoperability	ONVIF Profile S and G, API
Streaming Method	Unicast / Multicast
Maximum User Access	20 Users
Edge Storage	Network Attached Storage (NAS) Local PC for Instant Recording Micro SD Card Slot, maximum 128 GB
Web Viewer	IE
Management Software	Smart PSS, DSS, DMSS
Mobile Operating System	iOS, Android

Certifications

CE	EN 55032 EN 55024 EN 50130-4
Electromagnetic Compatibility (EMC)	CFR 47 FCC Part 15 Subpart B ANSI C63.4-2014

¹ The DORI distance is a measure of the general proximity for a specific classification to help pinpoint the right camera for your needs. The DORI distance is calculated based on sensor specifications and lab test results according to EN 62676-4, the standard that defines the criteria for the Detect, Observe, Recognize and Identify classifications.

Electrical

Power Supply	12 VDC, 1.5 A
Power Consumption	5.5 W

Environmental

Operating Conditions	-30° C to 60° C (-22° F to +140° F) Less than 95% RH
Ingress Protection	IP66
Vandal Resistance	IK10

Construction

Casing	Metal
Dimensions	ø122.80 mm x 89.0 mm (ø4.83 in. x 3.50 in.)
Net Weight	0.52 kg (1.23 lb)
Gross Weight	0.73 kg (1.61 lb)

Intelligence

IVS triggers an alarm and takes a defined action for the following events:

Standard Features	<ul style="list-style-type: none"> Tampering with the camera. Error writing to an onboard Micro SD card. Error sending or receiving data over the network. Unauthorized access to the camera.
Premium Features	
Motion	An object moves through any part of the scene.

Ordering Information

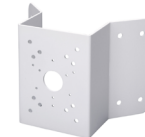
Type	Part Number	Description
2 MP WiFi PTZ Camera	22204UENI-W	2 MP 4x Starlight Mini WiFi PTZ Network Camera, True WDR, IVS
Accessories, optional	PFA137	Junction Box
	PFA151	Corner Mount (for use with PFB203W wall mount)
	PFA152-E	Pole Mount (for use with PFB203W wall mount)
	PFB203W	Wall Mount
	DH-PFM320D-US	12 VDC, 2 A Power Adapter

Accessories

Optional:



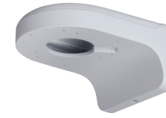
PFA137 Junction Box



PFA151 Corner Mount



PFA152-E Pole Mount



PFB203W Wall Mount



DH-PFM320D-US Power Adapter

Wall Mount	Pole Mount
PFB203W	PFB203W + PFA152-E
Junction Box Mount	
PFA137	

Dimensions (mm/in.)

