

# 1080p HDCVI Fixed Eyeball Camera

## 2.8 mm IR Eyeball Camera



- 1/2.7-in. 1080p Progressive-scan CMOS Sensor
- 1080p at 30 fps Maximum Resolution
- 2.8 mm Fixed Lens
- HD or SD Output, Switchable
- Maximum IR Length 30 m (98 ft), Smart IR
- IP67 Ingress Protection
- Five-year Warranty\*



### System Overview

The 1080p HDCVI camera leverages existing coax infrastructures to deliver forensic-level images seamlessly and over long distances. The camera uses next-generation ISP chip technology developed by Dahua to deliver stunning video and broadcast-quality audio. This home-grown ISP features the latest image processing algorithms and is optimized for security camera operations. With total control of the ISP features and production, Dahua can offer the latest security systems at a cost-effective price.

### Functions

#### Three Signals over One Coaxial Cable

HDCVI technology simultaneously transmits video, audio and data over a single coaxial cable. Dual-way data transmission allows the HDCVI camera to communicate with an HCVR to send control signals or to trigger alarms.

#### Long Distance Transmission

HDCVI technology guarantees real-time transmission over long distances without loss of video quality. HDCVI cameras provide the same resolution as most IP network camera systems using existing RG-59, RG-6, or CAT 6 UTP cabling.

#### Simplicity

HDCVI technology seamlessly integrates traditional analog security systems with upgraded, high-quality HD video, making it the best choice to protect security investments. The plug and play approach enables full HD video security without the hassles of configuring a network.

#### Smart IR

The camera is designed with microcrystalline LED IR illumination for low-light performance. Smart IR is a technology to ensure brightness uniformity in black and white images under low illumination. Dahua's unique Smart IR adjusts to the intensity of the camera's infrared LEDs to compensate for the distance of an object, and prevents IR LEDs from overexposing images as the object come closer to the camera.

### Multiple-format Support

The camera supports multiple video formats including, HDCVI, CVBS, AHD, and TVI. The camera can switch between these four formats via the OSD menu or the switch located on the video output cable, making the camera compatible with not only HDCVI DVRs but also most existing HD/SD DVRs.

### Environmental

With a built-in heater and a temperature range of  $-40^{\circ}\text{C}$  to  $+60^{\circ}\text{C}$  ( $-40^{\circ}\text{F}$  to  $+140^{\circ}\text{F}$ ), the cameras are designed for extreme temperature environments. The cameras, subjected to rigorous dust and water immersion tests, are certified to the IP67 rating making them suitable for demanding outdoor applications.

### Technical Specification

#### Camera

|                          |   |
|--------------------------|---|
| Image Sensor             | 1/2.7-in. CMOS  |
| Effective Pixels         | 1920(H) x 1280(V), 2MP                                |
| Scanning System          | Progressive   |
| Electronic Shutter Speed | 1/30 s to 1/100000 s                                  |
| Minimum Illumination     | Color: 0.02 Lux at F1.85 (30 IRE)<br>0 Lux with IR on |
| S/N Ratio                | More than 65 dB                                       |
| IR Distance              | Up to 30 m (98.04 ft)                                 |
| IR On/Off Control        | Auto, Manual  |
| IR LEDs                  | 12  |

#### Lens

|                          |                         |
|--------------------------|-------------------------|
| Lens Type                | Fixed Lens / Fixed Iris |
| Mount Type               | Board-in                |
| Focal Length             | 2.8 mm                  |
| Max Aperture             | F1.85                   |
| Horizontal Angle of View | 103°                    |
| Close Focus Distance     | 900 mm (35.43 in.)      |

#### DORI<sup>1</sup> Distance

| Detect<br>(8 ppf) | Observe<br>(19 ppf) | Recognize<br>(38 ppf) | Identify<br>(76 ppf) |
|-------------------|---------------------|-----------------------|----------------------|
| 37 m (121 ft)     | 15 m (49 ft)        | 8 m (26 ft)           | 4 m (13 ft)          |

#### Installation Angle

|       |  |
|-------|--|
| Range | Pan: 0° to 360°<br>Tilt: 0° to 78°<br>Rotation: 0° to 360° |
|-------|--|

#### Video

|                                 |  |
|---------------------------------|--|
| Resolution                      | 1080p (1920 x 1080)  |
| Frame Rate                      | 1080p at 30 fps<br>720p at 30/60 fps   |
| Video Output                    | One (1) BNC HDCVI High-definition Channel or<br>One (1) BNC CVBS, AHD or TVI Channel, switchable |
| Video Transmission <sup>2</sup> | RG-59/U Coax<br>720p: 800 m (2624.67 ft)<br>1080p: 500 m (1640.42 ft)                            |
|                                 | RG-6/U Coax<br>720p: 1200 m (3937.01 ft)<br>1080p: 800 m (2624.67 ft)                            |
|                                 | CAT 6 UTP<br>(balun required)<br>720p: 450 m (1476.38 ft)<br>1080p: 300 m (984.25 ft)            |
| Day/Night                       | Auto (ICR), Manual   |
| OSD Menu                        | Multi-language   |
| BLC Mode                        | BLC, HLC, DWDR   |
| WDR                             | Digital WDR  |
| Gain Control                    | AGC  |
| Noise Reduction                 | 2D   |
| White Balance                   | Auto, Manual   |
| Smart IR                        | Auto, Manual   |

#### Certifications

|                                     |   |
|-------------------------------------|---|
| Safety                              | EN55032, EN55024, EN50130-4<br>UL60950-1+CAN/CSA C22.2 No.60950-1 |
| Electromagnetic Compatibility (EMC) | FCC CFR 47 FCC Part 15 Subpart B<br>ANSI C63.4-2014               |

#### Electrical

|                   |                                   |
|-------------------|-----------------------------------|
| Power Supply      | 12 VDC ±30%                       |
| Power Consumption | Maximum 3.3 W (12 VDC with IR on) |

#### Environmental

|                      |   |
|----------------------|---|
| Operating Conditions | -40° C to +60° C (-40° F to +140° F),<br>Less than 90% RH<br>Initiate startup above -40° C (-40° F) |
| Storage Conditions   | -40° C to +60° C (-40° F to +140° F),<br>Less than 90% RH   |
| Ingress Protection   | IP67  |

#### Construction

|              |   |
|--------------|---|
| Casing       | Aluminium                                   |
| Dimensions   | ø93.40 mm x 79.40 mm (ø3.68 in. x 3.13 in.) |
| Net Weight   | 0.27 kg (0.60 lb)                           |
| Gross Weight | 0.34 kg (0.75 lb)                           |

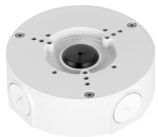
1. The DORI distance is a measure of the general proximity for a specific classification to help pinpoint the right camera for your needs. The DORI distance is calculated based on sensor specifications and lab test results according to EN 62676-4, the standard that defines the criteria for the Detect, Observe, Recognize and Identify classifications.  
2. Transmission distance results verified by real-scene testing in Dahua's test laboratory. Actual transmission distances may vary due to external influences, cable quality, and wiring structures.

**Ordering Information**

| Type                  | Part Number   | Description  |
|-----------------------|---------------|--|
| 1080p HDCVI Camera    | A211K02       | 1080p HDCVI 2.8 mm Eyeball Camera, Smart IR            |
| Accessories, optional | PFA130-E      | Waterproof Junction Box (For use alone)                |
|                       | PFA13A-E      | Junction Box (For use alone)                           |
|                       | PFA152-E      | Pole Mount (For use with PFB204W wall mount)           |
|                       | PFB204W       | Wall Mount (For use alone or with PFA152-E pole mount) |
|                       | DH-PFM321D-US | 12 VDC, 1 A Power Adapter                              |
|                       | DH-PFM800-4K  | 4K Passive HDCVI Balun                                 |

**Camera Accessories**

Optional:



PFA130-E  
Waterproof  
Junction Box



PFA13A-E  
Junction Box



PFA152-E  
Pole Mount



PFB204W  
Wall Mount



DH-PFM321D-US  
Power Adapter



DH-PFM800-4K  
4K HDCVI Balun

| Junction Mount | Pole Mount         |
|----------------|--------------------|
| PFA13A-E       | PFB204W + PFA152-E |
|                |                    |
| Wall Mount     |                    |
| PFB204W        |                    |
|                |                    |

**Dimensions (mm/in.) - 1080p HDCVI Camera**

