

2MP HDCVI IR Eyeball Camera

2.8 mm IR Eyeball Camera with Smart IR and Multi-format Support



- 1/2.7-in. 1080p Progressive-scan CMOS Sensor
- 2MP (1920 x 1080) at 30 fps Maximum Resolution
- 2.8 mm Fixed Lens
- Supports Multiple Video Formats: HDCVI, CVBS, AHD and TVI
- ArcticPro Series Camera — Operational down to -40°C (-40°F)
- Maximum IR Length 30 m (98 ft), Smart IR
- IP67 Ingress Protection
- Five-year Warranty*



System Overview

The 2MP HDCVI IR Eyeball camera leverages existing coax infrastructures to deliver forensic-level images seamlessly and over long distances. The camera uses next-generation ISP chip technology developed by Dahua to deliver stunning video and broadcast-quality audio. This home-grown ISP features the latest image processing algorithms and is optimized for security camera operations. With total control of the ISP features and production, Dahua can offer the latest security systems at a cost-effective price.

Functions

Four Signals over One Coaxial Cable

HDCVI technology simultaneously transmits video, audio and data over a single coaxial cable. Dual-way data transmission allows the HDCVI camera to communicate with an HCVR to send control signals or to trigger alarms.

Long Distance Transmission

HDCVI technology guarantees real-time transmission over long distances without loss of video quality. HDCVI cameras provide the same resolution as most IP network camera systems using existing RG-59, RG-6, or CAT 6 UTP cabling.

Simplicity

HDCVI technology seamlessly integrates traditional analog security systems with upgraded, high-quality HD video, making it the best choice to protect security investments. The plug and play approach enables full HD video security without the hassles of configuring a network.

Smart IR

The camera is designed with microcrystalline LED IR illumination for low-light performance. Smart IR is a technology to ensure brightness uniformity in black and white images under low illumination. Dahua's unique Smart IR adjusts to the intensity of the camera's infrared LEDs to compensate for the distance of an object, and prevents IR LEDs from overexposing images as the object come closer to the camera.

ArcticPro (with heater)

The Dahua ArcticPro Series of extreme-environment cameras combine temperature-tolerant components, a waterproof enclosure, and an integrated heater to ensure flawless operation in temperatures as low as -40°C (-40°F). For applications that demand high-resolution video with advanced features in extremely cold environments, the Dahua ArcticPro Series offers a camera to satisfy the most demanding requirements.

Multi-format Support

The camera supports multiple video formats including, HDCVI, CVBS, AHD, and TVI. The camera can switch between these four formats via the OSD menu or the switch located on the video output cable, making the camera compatible with not only HDCVI DVRs but also most existing HD/SD DVRs.

Environmental

With a built-in heater and a temperature range of -40°C to $+60^{\circ}\text{C}$ (-40°F to $+140^{\circ}\text{F}$), the cameras are designed for extreme temperature environments. The cameras, subjected to rigorous dust and water immersion tests, are certified to the IP67 rating making them suitable for demanding outdoor applications.

Technical Specification

Camera

| | |
|--------------------------|--|
| Image Sensor | 1/2.7-in. CMOS |
| Effective Pixels | 1920 (H) x 1280 (V), 2MP |
| Scanning System | Progressive |
| Electronic Shutter Speed | PAL: 1/25 s–1/100,000 s |
| Minimum Illumination | Color: 0.02 Lux at F1.9 (30 IRE) 0 Lux with IR on |
| S/N Ratio | More than 65 dB |
| IR Distance | Up to 30 m (98.04 ft) |
| IR On/Off Control | Auto, Manual |
| IR LEDs | One (1) IR Light |

Lens

| | |
|----------------------|---|
| Lens Type | Fixed Lens / Fixed Iris |
| Mount Type | M12 |
| Focal Length | 2.8 mm |
| Maximum Aperture | F2.0 |
| Angle of View | Horizontal: 102°, Vertical: 54°, Diagonal: 120° |
| Close Focus Distance | 0.5 m (1.6 ft) |

DORI¹ Distance

| Detect (8 ppf) | Observe (19 ppf) | Recognize (38 ppf) | Identify (76 ppf) |
|-------------------|---------------------|-----------------------|----------------------|
| 37 m (121 ft) | 15 m (49 ft) | 8 m (26 ft) | 4 m (13 ft) |

Installation Angle

| | |
|-------|--|
| Range | Pan: 0° to 360° Tilt: 0° to 78° Rotation: 0° to 360° |
|-------|--|

Video

| | |
|---------------------------------|--|
| Resolution | 1080p (1920 × 1080); 720p (1280 × 720); 960H (960 × 480) |
| Frame Rate | CVI: 1080p at 30 fps; 720p at 30 fps AHD: 1080p at 30 fps; 720p at 30 fps TVI: 1080p at 30 fps; 720p at 30 fps CVBS: 960H |
| Video Output | One (1) BNC HDCVI High-definition Channel or One (1) BNC CVBS, AHD or TVI Channel, switchable |
| Video Transmission ² | RG-59/U Coax 720p: 800 m (2624.67 ft) 1080p: 500 m (1640.42 ft) |
| | RG-6/U Coax 720p: 1200 m (3937.01 ft) 1080p: 800 m (2624.67 ft) |
| | CAT 6 UTP (balun required) 720p: 450 m (1476.38 ft) 1080p: 300 m (984.25 ft) |
| Day/Night | Auto (ICR), Manual |
| OSD Menu | Multi-language |
| BLC Mode | BLC, HLC, DWDR |
| WDR | Digital WDR |
| Gain Control | AGCI |
| Noise Reduction | 2D |
| White Balance | Auto, Manual |
| Smart IR | Auto, Manual |
| Mirror | Off, On |
| Privacy Masking | Off, On (8 Area, Rectangle) |

Certifications

| | |
|-------------------------------------|---|
| Safety | EN55032, EN55024, EN50130-4 UL60950-1+CAN/CSA C22.2 No.60950-1 |
| Electromagnetic Compatibility (EMC) | FCC CFR 47 FCC Part 15 Subpart B ANSI C63.4-2014 |

Electrical

| | |
|-------------------|-----------------------------------|
| Power Supply | 12 VDC ±30% |
| Power Consumption | Maximum 2.9 W (12 VDC with IR on) |

Environmental

| | |
|----------------------|---|
| Operating Conditions | –40° C to +60° C (–40° F to +140° F), Less than 90% RH |
| Storage Conditions | –40° C to +60° C (–40° F to +140° F), Less than 90% RH |
| Ingress Protection | IP67 |

Construction

| | |
|--------------|---|
| Casing | Aluminium |
| Dimensions | φ94.0 mm × 85.7 mm (φ3.70 in. × 3.37 in.) |
| Net Weight | 0.33 kg (0.73 lb) |
| Gross Weight | 0.47 kg (1.04 lb) |

1. The DORI distance is a "general proximity" of distance which makes it easy to pinpoint the right camera for your needs. The DORI distance is calculated based on sensor specification and lab test result according to EN 62676-4 which defines the criteria for Detect, Observe, Recognize and Identify respectively
2. Transmission distance results verified by real-scene testing in Dahua's test laboratory. Actual transmission distances may vary due to external influences, cable quality, and wiring structures.

Ordering Information

| Type | Part Number | Description |
|-----------------------|---------------|---|
| 1080p HDCVI Camera | A21BJ02 | 1080p HDCVI 2.8 mm Eyeball Camera, Smart IR |
| Accessories, optional | DH-PFA13A-E | Junction Box |
| | DH-PFB205W-E | Wall Mount Bracket |
| | PFA152-E | Pole Mount |
| | PFA106 | Mount Adapter |
| | PFB220C | Ceiling Mount |
| | PFM800-E | Passive HDCVI Balun |
| | DH-PFM321D-US | 12V 1A Power Adapter |

Accessories (Optional)



DH-PFA13A-E
Junction Box



DH-PFB205W-E
Wall Mount Bracket



PFA152-E
Pole Mount



PFA106
Mount Adapter



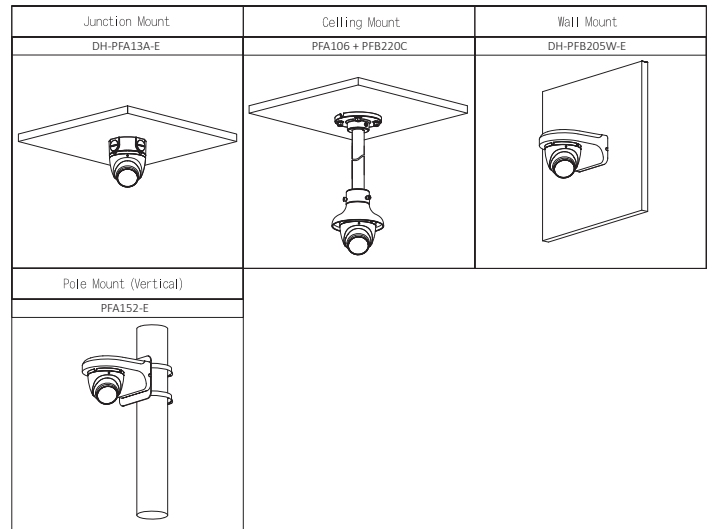
PFB220C
Ceiling Mount



PFM800-E
Passive HDCVI Balun



DH-PFM321D-US
12 VDC, 1 A
Power Adapter



Dimensions

mm [in.]

